



FOR LEASE!

Willowbrook Business Centre

Unit 403, 19292 – 60th Avenue, Surrey, BC

This 839 sq ft second floor walkup office has 1 office, open work area and boardroom, or 2 offices. Kitchen counter in open area.

Leslie Koole

604.533.1138 ext. 6
lesliek@benchmark-group.com





BUILDING NAME & ADDRESS

Willowbrook Business Centre

Unit 403, 19292 – 60th Avenue, Surrey, BC

LOCATION

Situated on the Langley/Surrey border, this well managed complex is within close proximity to many retail amenities of Cloverdale and Langley City. The property offers excellent access to 192nd Street, Highway 15, Highway 10/Langley Bypass, 200th Street and Fraser Hwy

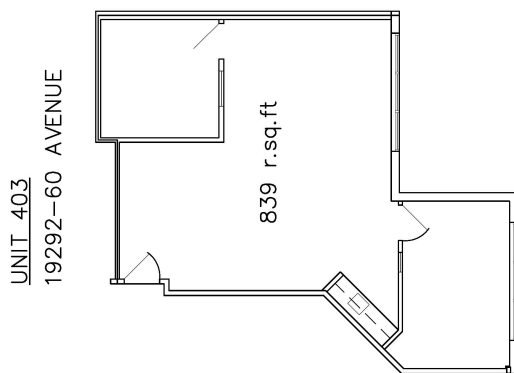
Leslie Koole

604.533.1138 ext. 6

lesliek@benchmark-group.com

UNIT SIZE

839 sq. ft upstairs office



AMENITIES

- Concrete tilt-up design
- 3 phase power
- overhead heaters in warehouse
- Common garbage compactor
- Site security
- Ample on-site parking
- Excellent property management service by Landlord

ZONING

CD – Comprehensive Development Zone

LEASE RATES

Office - \$16.00 psf

Operating Expenses - \$8.38 psf + 5% PM Fee

